

# T-Touch

# J7 System Scales

J7-20 Check Weighing J7-40 Piece Counting

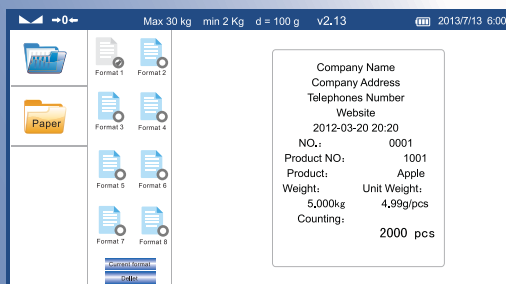
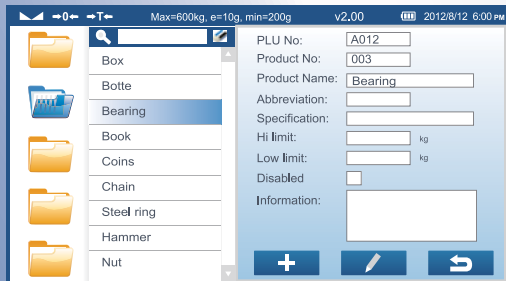
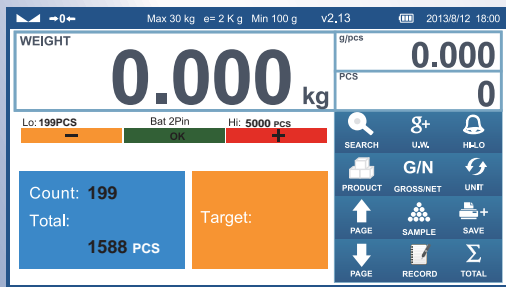


## Perfectly Computerized for Weighing management and control

Make your business more efficient and competitive

- Quick and easy to use high definition touchscreen display
- Accurate, fast and stable PowerAD weighing technology.
- Diversified weighing application software
- Graphic interactive operation increase productivity
- Multilingual information management system
- Versatility and customization in receipts and labels





## ● Graphic operation interface

Graphic interactive operation interface, quick and easy to use. It help you increase productivity and avoid mistakes.

## ● Multilingual information management system

Computerized product management system, easily input and call out PLU. It support multi-language operating environment.

## ● Customized daily and product report

It support produce diversyied daily reoprts and product report on screen or export to a PC software.

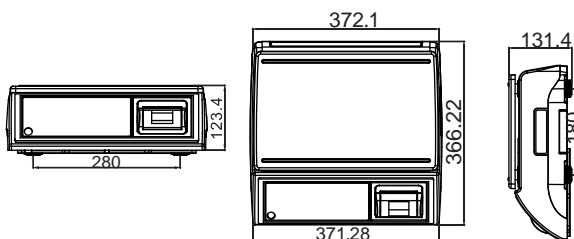
## ● Versatility in receipts and labels

By RS-232, It can connected to a ticket or label printer. Many ticket and label formats can be selected from display. Also Customized printing format available for different customers' needs.

### Peripherals:



### Dimentions (mm) :



Model	J7 Series System Scales		
Application	J7-20 Check Weighing/J7-40 Piece Counting		
Capacity	3kg/6kg	6kg/15kg	15kg/30kg
Readability	0.1g/0.2g	0.2g/0.5g	0.5g/1g
Platform	240 x 370mm		
Display	7" 800 x 480 High-definition color screen		
Built-in Printer	Built-in thermal Receipt printer, print width is 48mm		
Panel	Resistance touchscreen		
Memory	RAM: 128 MB Flash:256 MB		
Operating System	TOS 1.0 Embedded system		
Ports	2 x USB, 1 x RS-232		
Battery	Rechargeable battery for 20 hours continue use(Optional)		

Distributor: